

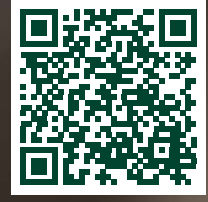
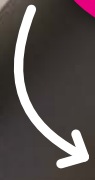
# QLH DUO/TRIO

## HIGH-QUALITY LAMINATED TIMBER DUO/TRIO

Our high-quality laminated timber consists of 2 or 3 high-quality laminates and is manufactured in accordance with DIN EN 14080. This guarantees an **increased load-bearing capacity** and provides particularly **high dimensional stability**. Exactly the right material for environmentally friendly and innovative timber construction.



**LEARN  
MORE ...**



SAWN TIMBER

CE SAWN TIMBER

BSH

QLH DUO/TRIO

KVH®

# QLH-DUO-PLUS® N-VIS

## PRODUCT DESCRIPTION:

- CE quality laminated timber for non-visible areas (n-vis)
- spruce/fir C24
- manufactured in accordance with DIN EN 14080
- cut, heartwood-separated
- dried to max. 15% wood moisture content
- planed
- chamfered edges
- 60 mm and 80 mm thick as laminated timber GL24h

## PRODUCT BENEFITS:

- dimensionally accurate
- form and dimensional stability
- calculable
- quality-tested



QLH-Duo-plus® n-vis, spruce/fir, made in Germany 

		WIDTH					
THICKNESS	pcs/pallet	80 mm	100 mm	120 mm	140 mm	160 mm	180 mm
	60 mm	112 *	88	72	64	56	48
	80 mm	84 *	66	54	48	42	36
	100 mm		44	36	32	28	24
	120 mm			36	32	28	24
	140 mm				24	21	18
	160 mm					12	12
	pcs/pallet	200 mm	220 mm	240 mm	260 mm	280 mm	
	60 mm	40	40	32	32		
	80 mm	30	30	24	24		
	100 mm	20	20	16	16		
	120 mm	20	20	16	16	16	
	140 mm	15	15	12	12	12	
	160 mm	10	8	8	8	8	

Lengths on request | Warehouse lengths: 5.00 m and 13.00 m

\* separation products

Examples of applications: Timber frame construction, low-energy and passive houses, environmentally friendly and ecological timber construction, roof and ceiling constructions, multi-storey timber construction, carports, etc.

# QLH-TRIO-PLUS® N-VIS

## PRODUCT DESCRIPTION:

- CE quality laminated timber for non-visible areas (n-vis)
- spruce/fir C24
- manufactured in accordance with DIN EN 14080
- cut, heartwood-separated
- dried to max. 15% wood moisture content
- planed
- chamfered edges

## PRODUCT BENEFITS:

- dimensionally accurate
- form and dimensional stability
- calculable
- quality-tested



QLH-Trio-plus® n-vis, spruce/fir, made in Germany 

THICKNESS	WIDTH						
	pcs/pallet	180 mm	200 mm	220 mm	240 mm	260 mm	280 mm
	180 mm	12	10	10	8	8	8
	200 mm		10	10	8		8
	240 mm				8		8

Lengths on request | Warehouse length: 13.00 m

Examples of applications: Timber frame construction, low-energy and passive houses, environmentally friendly and ecological timber constructions, roof and ceiling constructions, multi-storey timber construction, carports, etc.

# QLH-DUO-PLUS® VIS

## PRODUCT DESCRIPTION:

- CE quality laminated timber for visible areas (vis)
- spruce/fir C24
- manufactured in accordance with DIN EN 14080
- cut, at least heartwood-separated
- dried to max. 15% wood moisture content
- planed
- chamfered edges
- individually shrink-wrapped



## PRODUCT BENEFITS:

- dimensionally accurate
- form and dimensional stability
- calculable
- quality-tested

QLH-Duo-plus® vis, spruce/fir, made in Germany 

		WIDTH							
THICKNESS	pcs/pallet	100 mm	120 mm	140 mm	160 mm	180 mm	200 mm	220 mm	240 mm
	100 mm	33	27	24	18	18	15	15	12
	120 mm		16	14	14	12	10	10	8
	140 mm			14	14	12	10	10	8
	160 mm				12	12	10	10	8

Lengths on request | Warehouse length: 13.00 m

Examples of applications: Timber frame construction, low-energy and passive houses, environmentally friendly and ecological timber constructions, visible roof and ceiling constructions, multi-storey timber construction, carports, etc.

# QLH-TRIO-PLUS® VIS

## PRODUCT DESCRIPTION:

- CE quality laminated timber for visible areas (vis)
- spruce/fir C24
- manufactured in accordance with DIN EN 14080
- cut, at least heartwood-separated
- dried to max. 15% wood moisture content
- planed
- chamfered edges
- individually shrink-wrapped



## PRODUCT BENEFITS:

- absolute dimensional accuracy
- form and dimensional stability
- calculable
- quality-tested

QLH-Trio-plus® vis, spruce/fir, made in Germany 

THICKNESS	WIDTH				
	pcs/pallet	180 mm	200 mm	220 mm	240 mm
	180 mm	12	10	10	8
	200 mm		10		8
	240 mm				8

Lengths on request | Warehouse length: 13.00 m

Examples of applications: Timber frame construction, low-energy and passive houses, environmentally friendly and ecological timber constructions, visible roof and ceiling constructions, multi-storey timber construction, carports, etc.

# QLH-DUO-PLUS® DOUGLAS FIR SELECT

**PRODUCT DESCRIPTION:**

- CE quality laminated timber for visible areas (SELECT)
- Douglas fir C24
- manufactured in accordance with DIN EN 14080
- cut, heartwood-separated
- dried to max. 15% wood moisture content
- planed
- chamfered edges

**PRODUCT BENEFITS:**

- high durability
- high strength
- dimensionally accurate
- form and dimensional stability
- calculable
- quality-tested
- high natural resistance to fungi or insect infestation



QLH-Duo-plus® Douglas fir SELECT, made in Germany 

		WIDTH					
THICKNESS	pcs/pallet	120 mm	140 mm	160 mm	180 mm	200 mm	240 mm
	120 mm	16		14	12	10	8
	140 mm		16			10	8
	160 mm			12		10	8

Lengths on request | Warehouse lengths: 5.00 m and 13.00 m

Application examples: Decorative timber construction, exterior construction, visible roof and ceiling construction, carport, etc.

# QLH-TRIO-PLUS® DOUGLAS FIR SELECT

## PRODUCT DESCRIPTION:

- CE quality laminated timber for visible areas (SELECT)
- Douglas fir C24
- manufactured in accordance with DIN EN 14080
- cut, heartwood-separated
- dried to max. 15% wood moisture content
- planed
- chamfered edges

## PRODUCT BENEFITS:

- high durability
- high strength
- dimensionally accurate
- form and dimensional stability
- calculable
- quality-tested
- high natural resistance to fungi or insect infestation



QLH-Trio-plus® Douglas fir SELECT, made in Germany 

THICKNESS	WIDTH		
	pcs/pallet	180 mm	200 mm
180 mm		12	10
200 mm			10

Lengths on request | Warehouse lengths: 5.00 m and 13.00 m

Application examples: Decorative timber construction, exterior construction, visible roof and ceiling construction, carport, etc.